

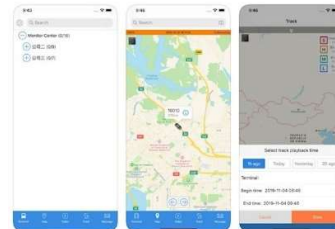
Welcome to the Live View and remote video playback facility on the Fleet Witness CMSV6 platform.

You can access the system in 3 ways – Smartphone – PC software download – Web Browser. We recommend downloading the desktop software because it will provide a few additional features, but the core functions are the same on each.

Mobile smartphone app – search for CMSV6

Your login details are: -

User: TBA by your dealer
Pass: TBA by your dealer
Server: es.fwlive.co.uk



From the smartphone app you can view the following: -

- 1) Real time location of your vehicles on a Map.
- 2) Live View from any camera providing the vehicle is in a good GSM reception area & the ignition is switched on or 30 minutes after the ignition is switched off, this can be set to 1 hour if required.
- 3) Playback video footage that is on the hard drive.
- 4) Please Note! You cannot download footage to the smartphone, only via a PC.

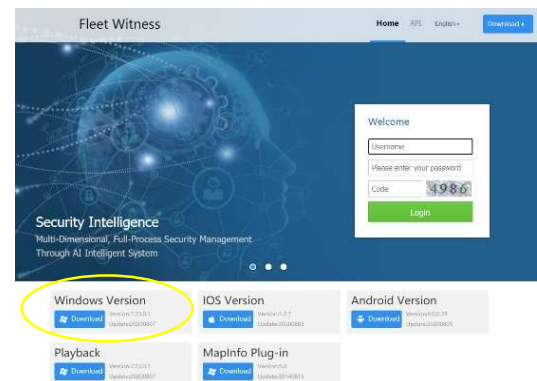
PC Software Download

Access the system from a Windows PC and have more features than the mobile app version, you will need to install software onto your PC from <http://es.fwlive.co.uk:8080/> and click on Windows PC download and follow the instructions.

- 1) All the same features as the mobile app and more...
- 2) View & download footage to the cloud or your PC hard drive.
- 3) Lots of other features.

Your login details are: -

User: TBA by your dealer
Pass: TBA by your dealer
Server: es.fwlive.co.uk



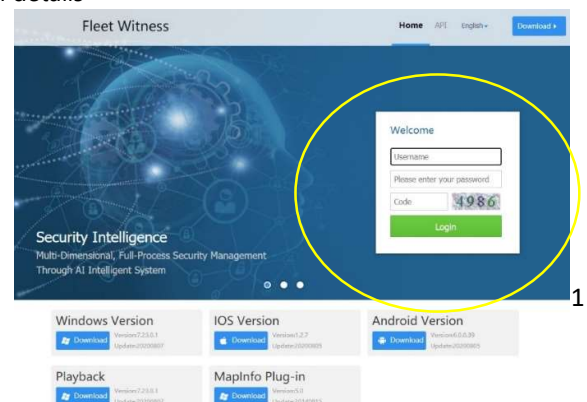
Web Browser Access

Access the system from a Web Browser without the need to download any software to your PC.

- 1) Nearly all the same features as the PC software.
- 2) Enter this URL - <http://es.fwlive.co.uk:8080/> and enter your login details

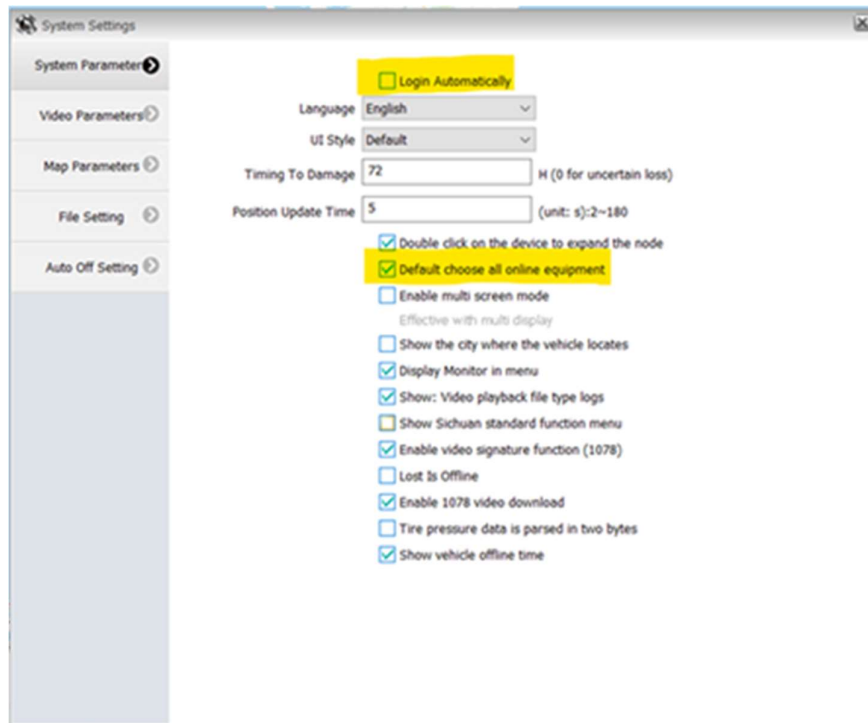
Your login details are: -

User: TBA by your dealer
Pass: TBA by your dealer
Enter the code shown



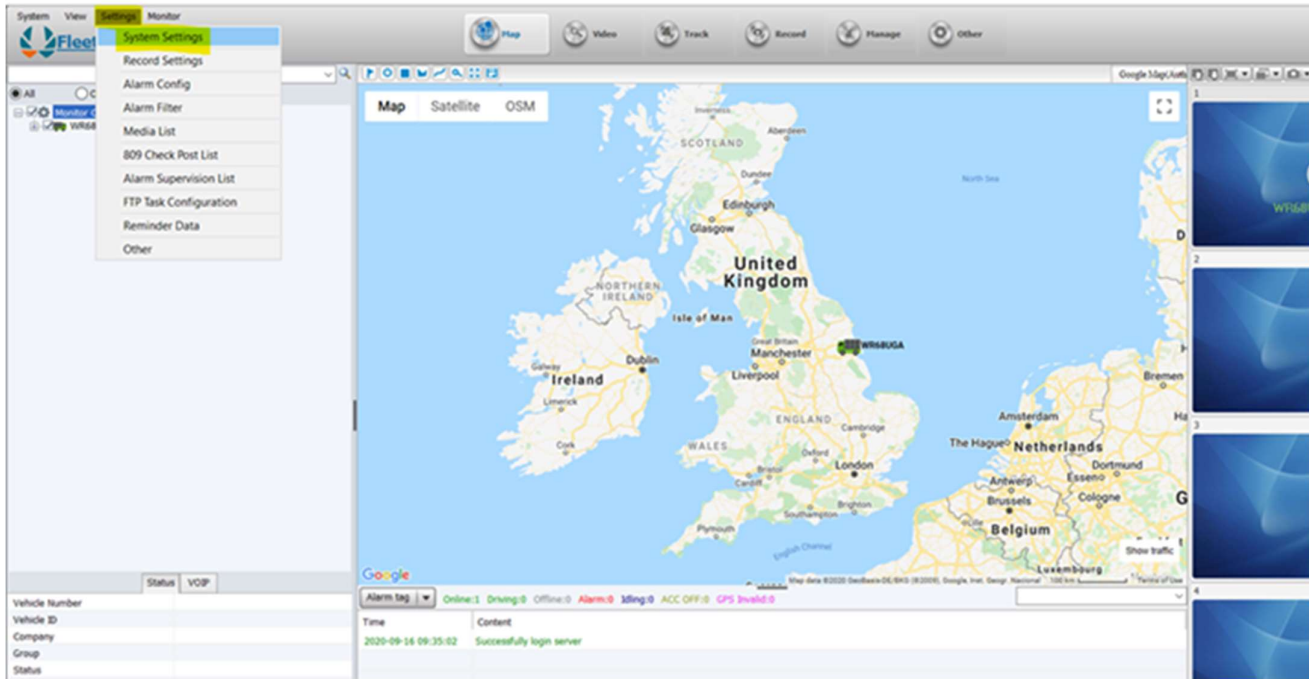
Click on Settings from the top menu and then enter System Settings. This will open a pop-up window; you can check login automatically to prevent having to enter login details each time.

You can also check the box to Default choose all online equipment. This will automatically show the location of all online devices when logging in. The settings will save straight away, you can just close the window once you are finished.



Secondly, from the map screen click and drag the map to the default position that you want to view when first logging in. You will see some icons along the top left of the map. The one on the far right can be clicked to save this default position.

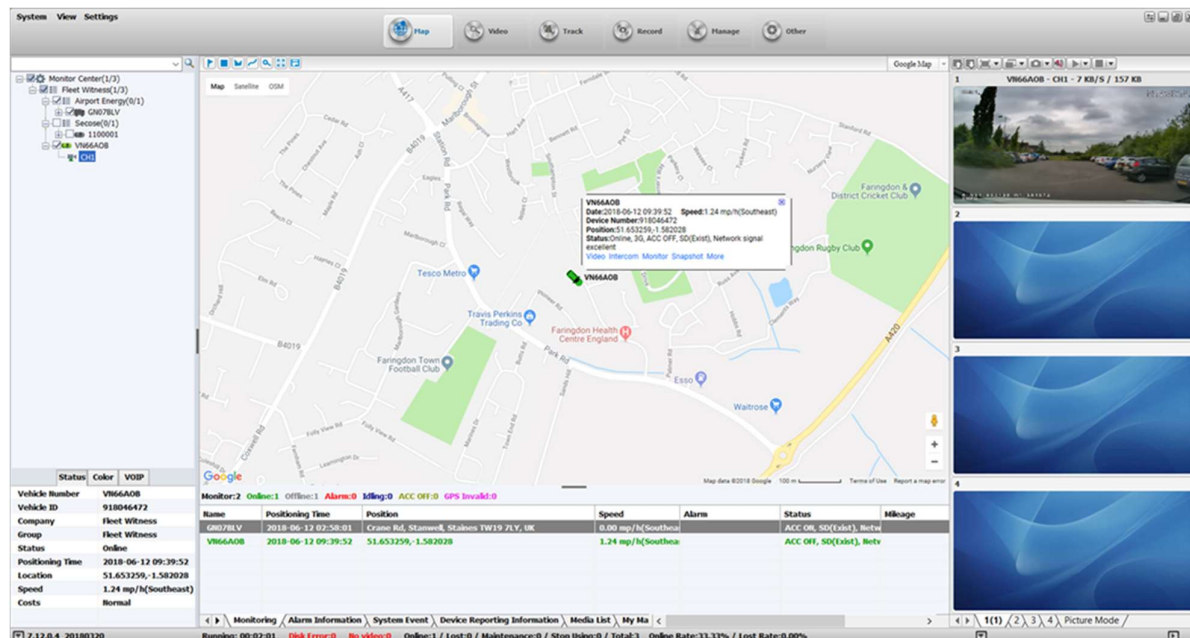
Finally, in the bottom right hand corner you will see an option for Show Traffic. Clicking this will enable the Google Maps traffic layer if you wish to use it.



Using the System

To view a vehicle location, you can simply tick the checkbox next to the corresponding vehicles, you'll see these in the left hand column. To view a live video stream, you can click the + symbol next to the vehicle and then double click on the camera you wish to view. It should begin streaming within a few seconds.

You can stop the video streaming by clicking on the Stop icon at the top of the video pane. Streaming will also automatically stop after 1-minute, we do this to prevent excessive use of data. The live stream allows you to check in on the vehicles in real-time but should not be overused.



To download recorded footage, you need to access the Record tab from along the top row of options. Then chose the vehicle, time frame and hit search button that is in the left hand pane. Once the footage has loaded you should see some green bars at the bottom to represent the footage available to view, double click on the time you want to view and a stream should begin to playback.



You can double click on the video pane to make it larger

If you find a clip you wish to download, make a note of the time, and then go into the File window, shown below next to 7. Once in here locate the clip and then right click to download it. Do not download all files, just the ones you need.

Once the file has downloaded you can enter the Download window, right click on one of the files and select show in folder. This will take you to the location that the file has been saved to on your PC.



This is only meant as an initial introduction. If you have any questions or want further training, please arrange for a remote training session with one of our team.